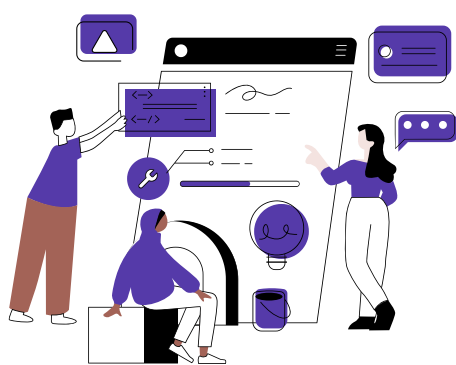


# EVIDENCE-BASED BENEFITS OF CLINICAL EDUCATION

## STUDENTS ADD VALUE



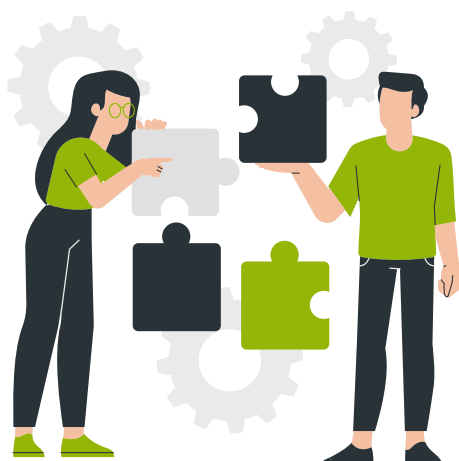
Students can take detailed patient histories, serve as patient navigators, work on QI projects, and do other daily tasks. The **KEY** is to align student activities with facility needs.

## PRODUCTIVITY

Evidence shows that productivity is not impacted, or even increases in some settings when students are involved! The **KEY** is to find a balance between clinical activities and education.



## PRECEPTOR PERCEPTION



**BOTH** the student and the preceptor benefit. Clinicians who supervise students feel more positive about their own knowledge. The **KEY** is to provide for adequate preceptor training.

## PATIENT PERCEPTION

Patients believe that students are an important part of the care team. The **KEY** is to emphasize good communication from the preceptor about the student's role and how they fit in.



View the full articles  
at the QR code.



Clinical Education Task Force

[asahp.org/cetf](http://asahp.org/cetf) | [cetf@asahp.org](mailto:cetf@asahp.org)