



INTERPROFESSIONAL PRACTICE AND EDUCATION CENTER

Indiana University – 2019 ASAHP Awardee

ASAHP Virtual Series Webinar

October 28, 2020

Laura Romito, DDS, MS, MBA, FNAP



twitter.com/ipectr

INDIANA UNIVERSITY



facebook.com/ipectr/



**INTERPROFESSIONAL PRACTICE
AND EDUCATION CENTER**

IU IPE Center

- Charge: Ensure that all IU health science, public health, and social work learners graduate competent to work in teams to improve healthcare, health and well-being
 - Faculty Development and Engagement
 - Interprofessional Education
 - Research and Scholarship
 - Interprofessional Practice
- Est. by: President, Provost, IUPUI Chancellor, Deans of University Clinical Affairs Schools
- Campus Partners



Vision: All IU and IUPUI health science learners are prepared for interprofessional practice that improves population and individual health outcomes.

Develop the infrastructure and capacity to establish the IU IPE Center as a dependable respected, and valued partner.

Demonstrate interprofessional collaboration as an actionable core value across the organization.

Professional and leadership development that supports and improves interprofessional practice and education.

Design, implement, and evaluate educational programs in which teamwork, shared learning, and collaborative practice are explicitly connected to improved population and individual health outcomes.

Build community and practice partnerships that include learners as a central resource to improve individual and population health.

Conduct and disseminate scholarship emerging from and supporting continuous improvement of interprofessional practice and education.



The IU IPE Team



Barb Manz
Friesth



Laura
Romito



Zach
Weber



April D.
Newton



Brittany
Daulton



Charles
Binion



Kelsey
Binion



Alex
Buchanan



Jennifer
Burba



Jinae
Hill



Kathy
Hill



Amy
Maddox



David
Plough



Trent
Severt



TEACH!

Team Education Advancing Collaboration in Healthcare (TEACH!)

- Goal
 - Competencies
- Addresses statewide health priorities
- Individual and population health components
- Statewide Initiative – 9 campuses
- 8 University Partners
- More than 8,000 health science learners each year





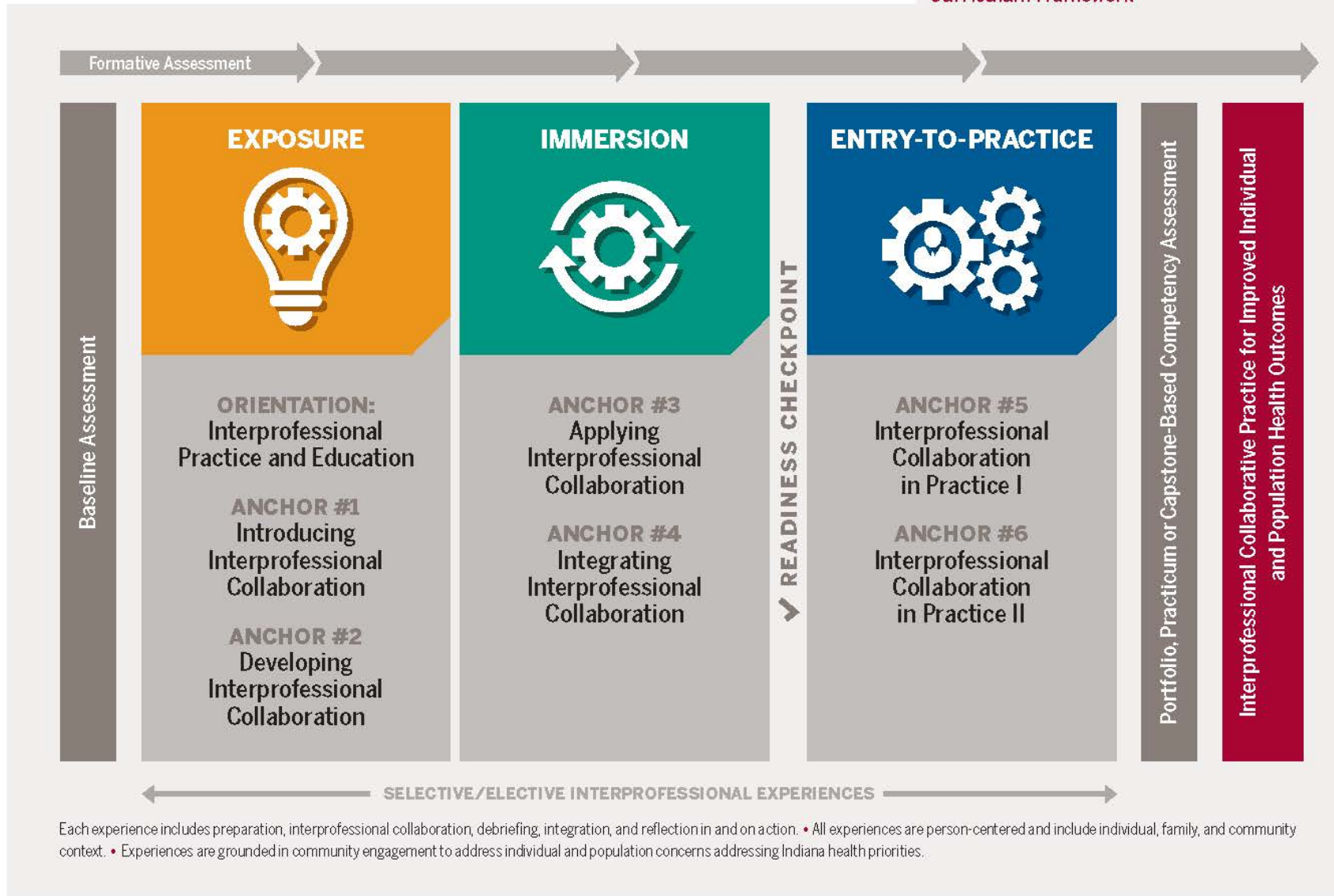
TEACH!

Team Education Advancing
Collaboration in Healthcare!



INTERPROFESSIONAL PRACTICE
AND EDUCATION CENTER

Curriculum Framework



TEACH!

Statewide Impact 2018-2019

Northwest-Gary

- 364 students
- 33 facilitators

INDIANAPOLIS

- 3551 students
- 218 facilitators
- 48% of learners state-wide

West Lafayette

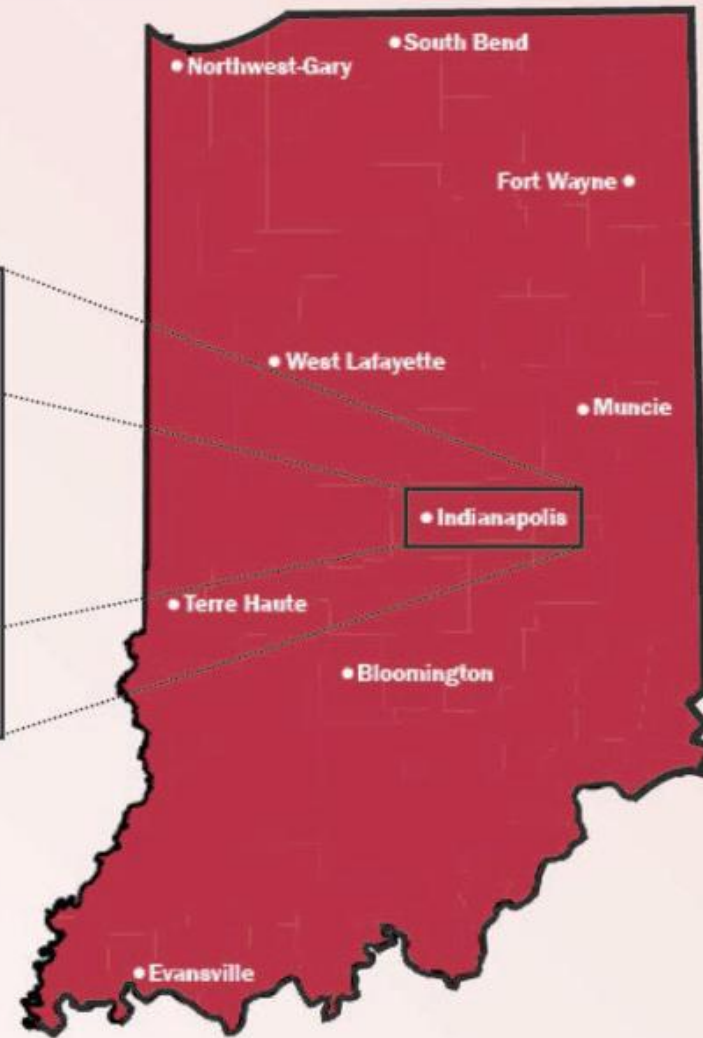
- 288 students
- 32 facilitators

Online

- 382 students

Evansville

- 211 students
- 19 facilitators



South Bend

- 392 students
- 44 facilitators

Fort Wayne

- 465 students
- 38 facilitators

Muncie

- 146 students
- 18 facilitators

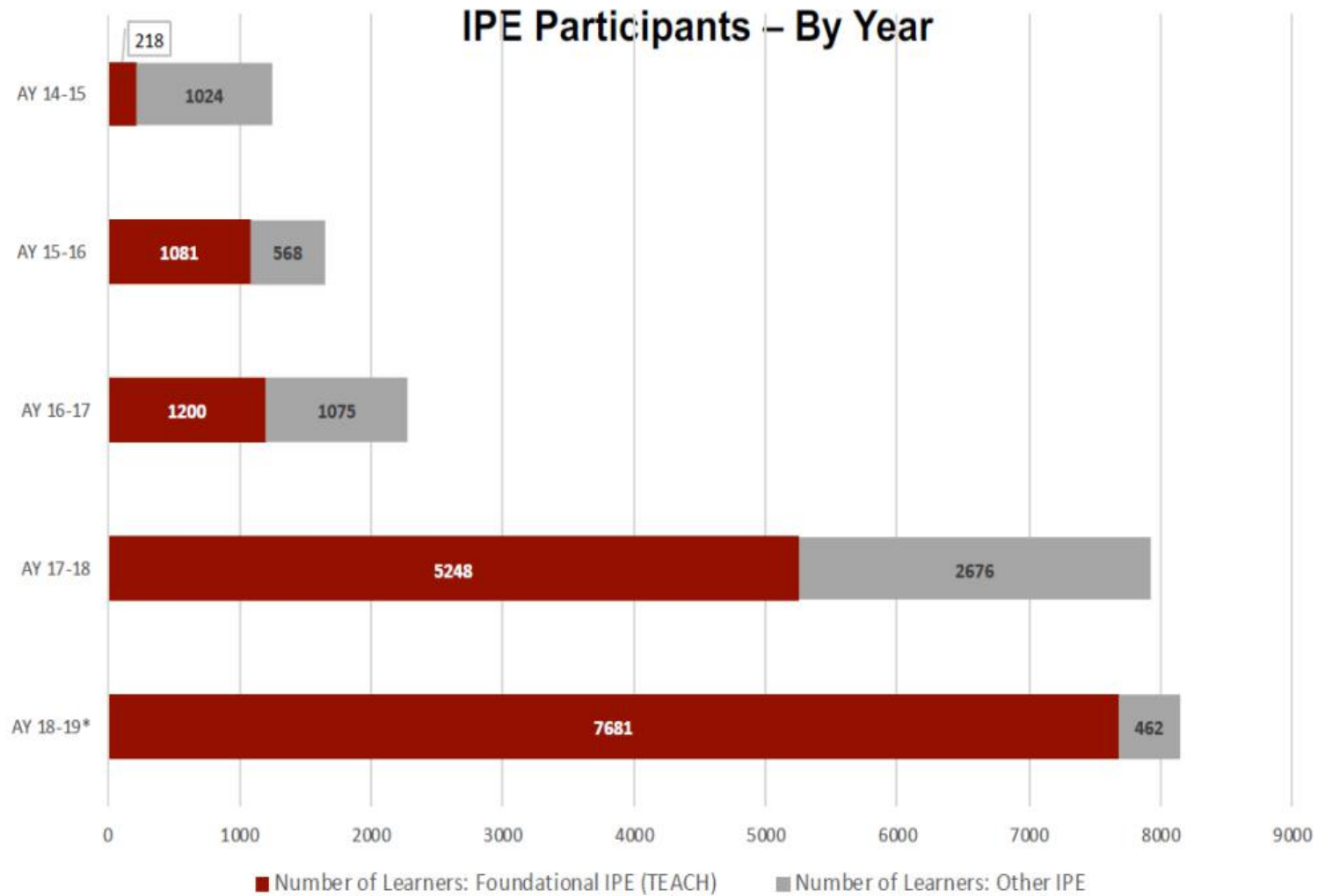
Bloomington

- 1189 students
- 102 facilitators

Terre Haute

- 313 students
- 45 facilitators

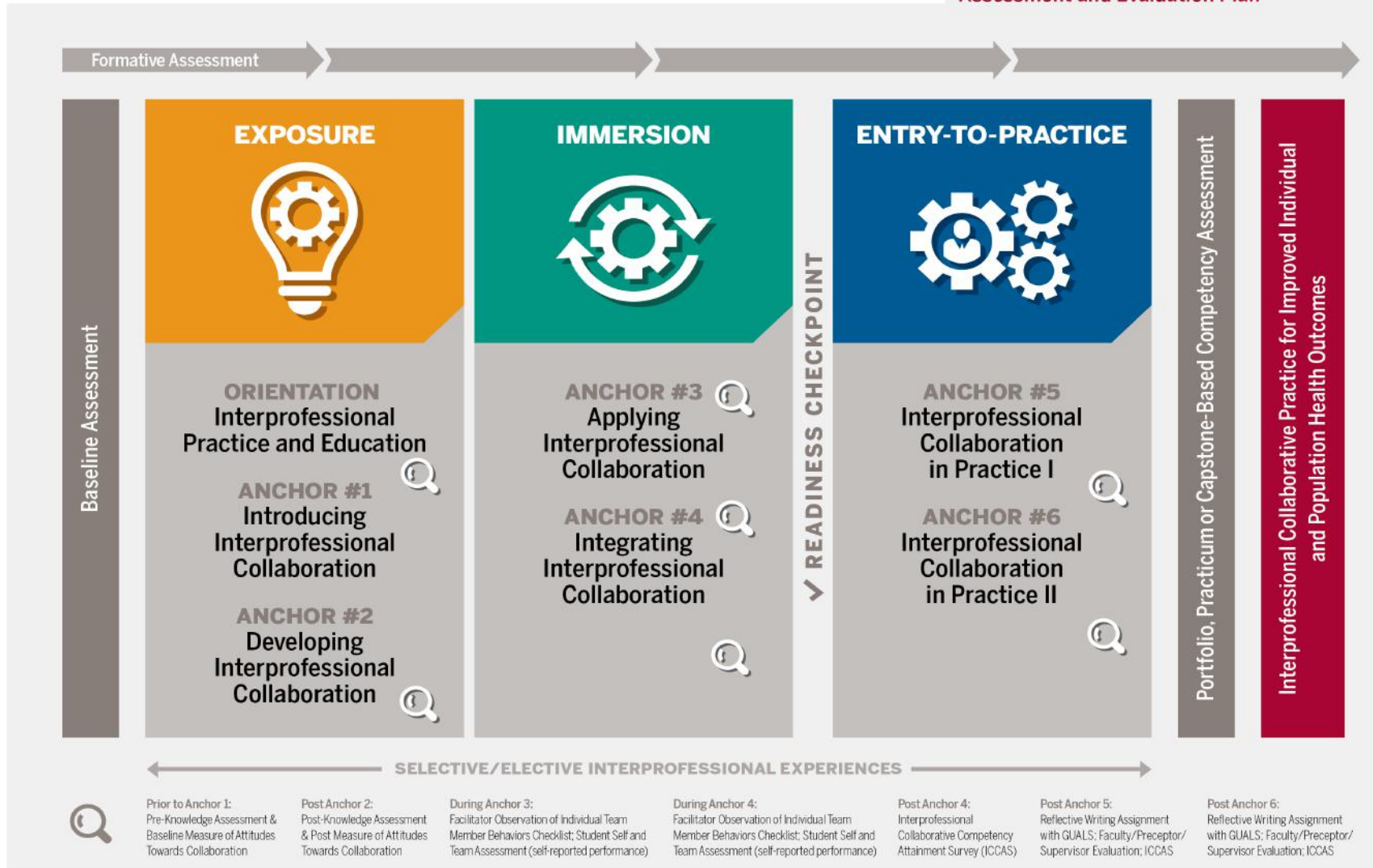
IU IPE Growth: 2014-2019



*AY 18-19: Includes spring 18 learners from AY 17-18 column with new fall 2018 learners added to project AY 18-19 numbers.



Assessment and Evaluation Plan



Outcomes

Freeth/Kirkpatrick Model of Evaluation

Level of Evaluation	Measure	
Reaction	<ul style="list-style-type: none">• Post Event Continuous Quality Improvement Survey	<ul style="list-style-type: none">• Student Self Report for each event
Knowledge and Skill Acquisition	<ul style="list-style-type: none">• Student Self and Team Assessment Measure• Knowledge Assessment• ICCAS	<ul style="list-style-type: none">• Measure for acquisition and growth from Anchor 3 to Anchor 4• Measure for change/increase in knowledge Pre-Anchor 1 to Post-Anchor 2• Measure for change/increase in skills from pre (prior to participating in the curriculum) to post (after participation in the curriculum)
Behavior Change	<ul style="list-style-type: none">• Facilitator Direct Observation• Student Self and Team Assessment	<ul style="list-style-type: none">• Measure for change/increase from Anchor 3 to Anchor 4

How Assessment has Changed over Time

- Less Reliance on student self-report
- Triangulation of facilitator direct observation and student perceptions
- Faculty training around assessment and evaluation of interprofessional learning and simulation behaviors
- Instrument validation studies



Professional Development

- Lead the Way Faculty Development Workshop, 2015
- Facilitator Training
- Peer Led Team Learning
- Summer Faculty IPE Conference, 2019
- Promotion and Tenure Guidelines
- DMAI Faculty Annual Report





Collaboration in Interprofessional Practice

Well Child and Oral Health Clinic

- Initiated in 2015
- Quarterly
- 10-20 patients / 10+ learners / 4-5 disciplines per clinic
- Serves MDWise pediatric patients
- Jointly resourced:
 - located at the IU Health Family Medicine Center
 - IU Health, IU Dental and Medical Schools; IU IPE Center & MDWise



Team Care Clinic

- Initiated 2018
- Monthly
- 10-15 patients / 5-10 learners / 6-7 disciplines per clinic
- Serves patients presenting to primary care with multiple comorbidities
- Jointly resourced:
 - Located at the IU Health Family Medicine Center
 - IU Health, IUSM; IU IPE Center



Comprehensive Pain Assessment Clinic (CoPAC)

- Initiated 2019
- Weekly
- 3-4 patients / 7-10 learners / 3-4 disciplines per clinic
- Serves patients presenting to primary care recently prescribed or in the process of weaning away from opioids
- Jointly resourced:
 - Located at the IU Health/ Family Medicine Center with IU Health, IUSM, IU IPE Center in conjunction with IU Addictions Grand Challenge
- Aug. 2020 Launched Hybrid F2F and Telehealth model





Scholarship

- > 25 IPE and IPCP publications since 2014
- >\$14 million external funding
- 5 National Academies of Practice Distinguished Scholar Fellows
- IU representation on multiple national and international organizations and boards
- Indiana Statewide IPE Conference, 2014
- Collaborating Across Borders VII, 2019



Next Steps

- Expand IP Practice
- Evolve TEACH!
- Disseminate outcomes and better practices
- Distinguish IU in the field of IPE / IPCP



IPE 10x10 Podcast

- 10 episodes, ~10 minutes each
- Get it everywhere
- 4 episodes available
- New page on our website





Questions?

Thank You !

If you have questions or feedback, please
contact:

IU Interprofessional Practice
and Education Center

ipectr@iu.edu



INDIANA UNIVERSITY
FULFILLING *the* PROMISE